

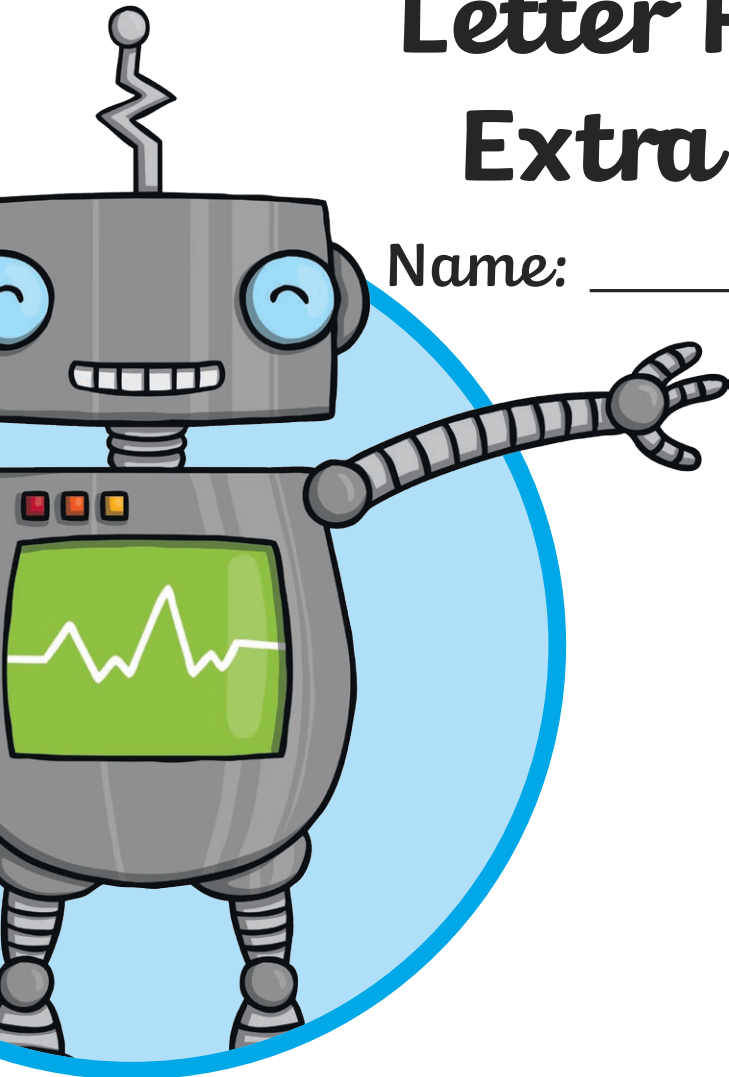
KS1

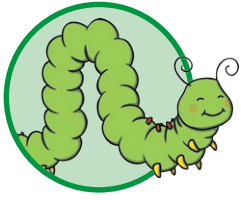
Cursive

Letter Formation

Extra Practice

Name: _____

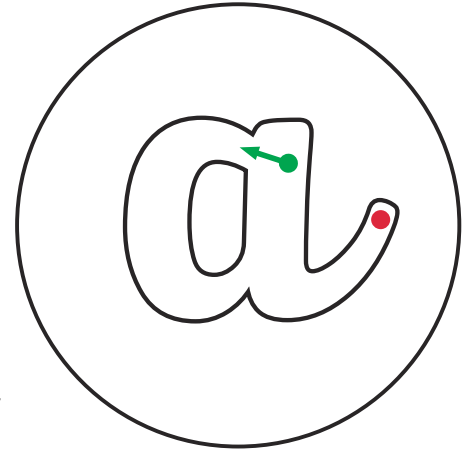




The Letter 'a'

Start with a c and then go upwards all the way.

Go straight back down again and hooray – you made an **a**!



Can you add an 'a' to these words to complete the words and phrases?

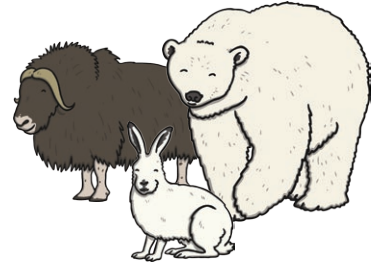
 n rm



 ngry m n

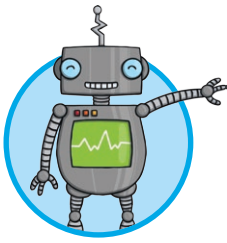


 rctic nim ls



a

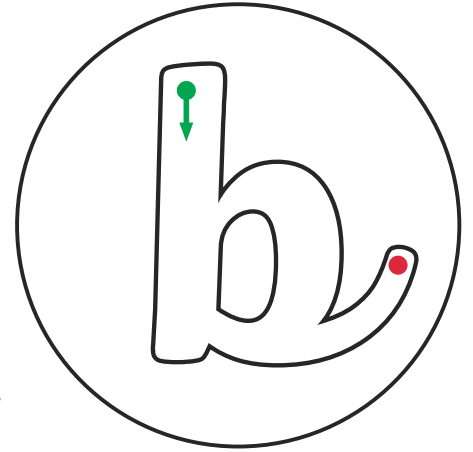
a



The Letter 'b'

Go straight down and halfway up again neatly.

Then all the way around and join to the bottom to make a **b**!

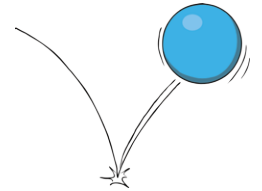


Can you add a 'b' to these words to complete the words and phrases?

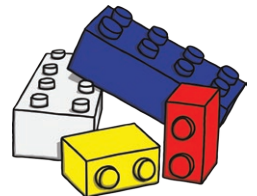
uzzing ee



ouncy all

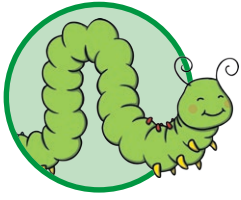


ilding ricks



b

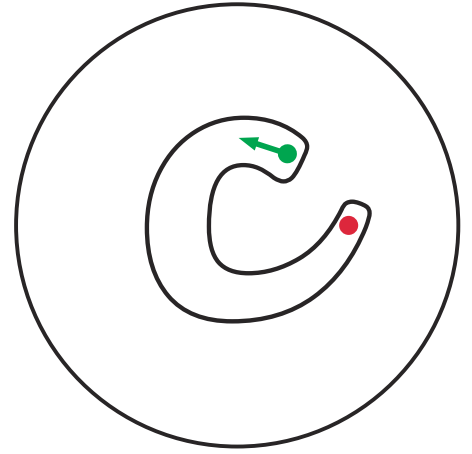
b



The Letter 'c'

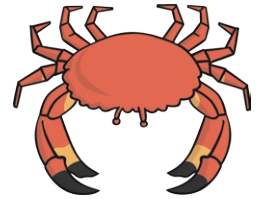
Start drawing a circle and curl slowly.

Stop before you finish and it makes a c.



Can you add a 'c' to these words to complete the words and phrases?

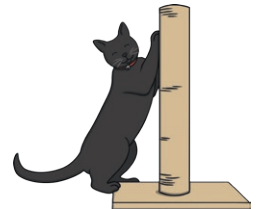
rab law



lean ar

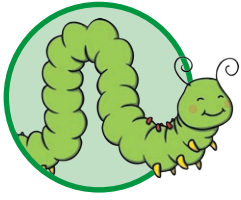


lever at



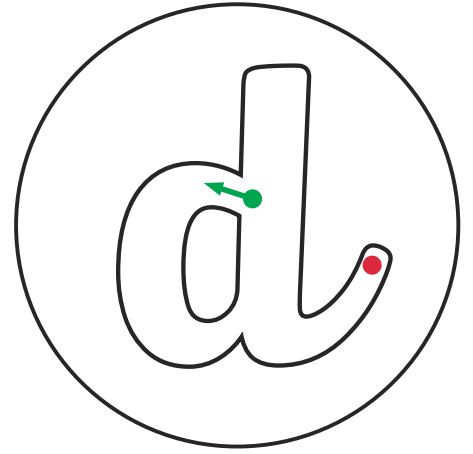
c

c



The Letter 'd'

Start with a c and then climb a tree.
Come back down and you have a
d!

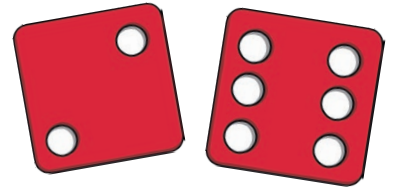


Can you add a 'd' to these words to complete the words and phrases?

 ry ishes



 otty ice

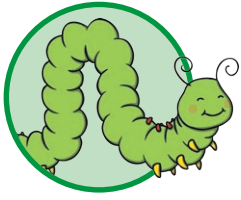


sa og



d

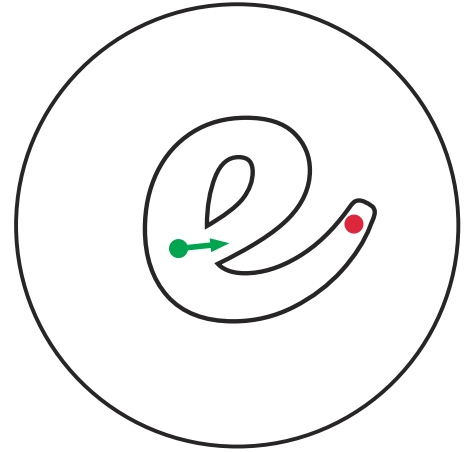
d



The Letter 'e'

Start in the middle and go across carefully,

Then curl like a snail and you have an e!

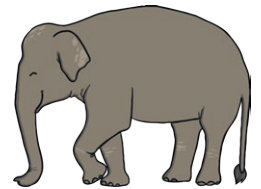


Can you add an 'e' to these words to complete the words and phrases?

r_d_lf



_l_phant

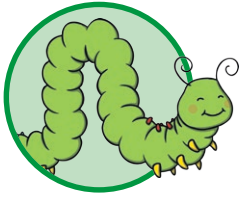


_ight_ggs



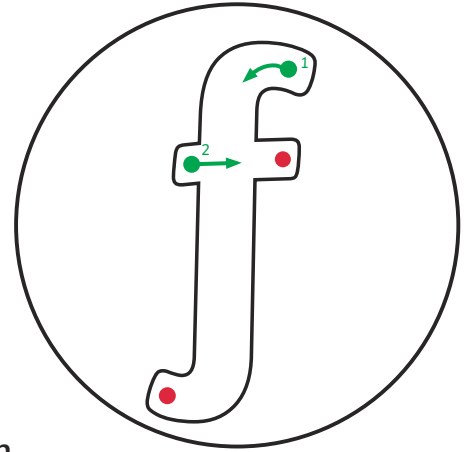
e

e



The Letter 'f'

Curl the top, go straight down and swing to the left. Go back up and cross the belly of your **f**!

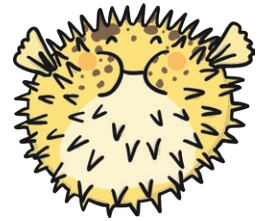


Can you add an 'f' to these words to complete the words and phrases? What sound does the 'f' make in each word?

ive ingers



unny ish

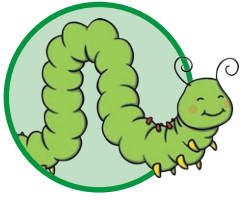


resh lowers



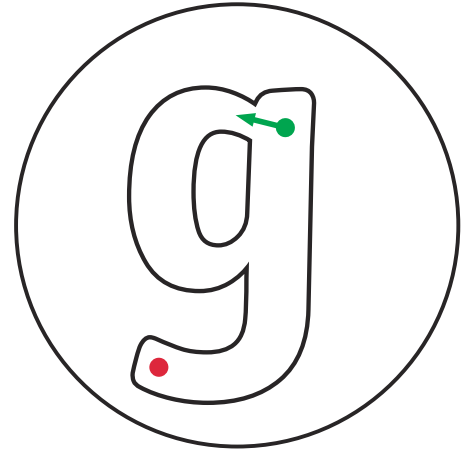
f

f



The Letter 'g'

To begin writing a **g**, you need a c,
Then go down and make a tail for
a little monkey!



Can you add a 'g' to these words to complete the words and phrases?

ood irl



reen rass

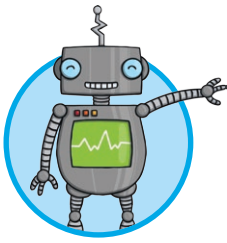


uinea pi



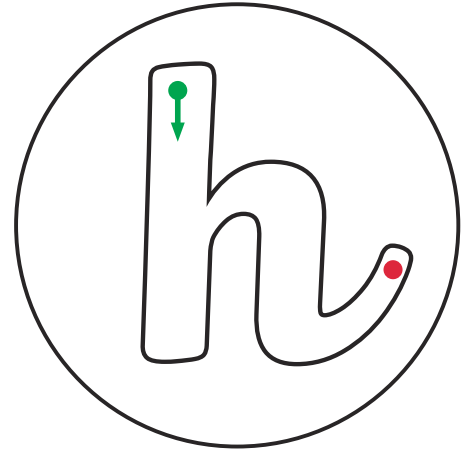
g

g



The Letter 'h'

Start at the top, go straight down and back halfway. Then over a hump and down to the line to make an **h**!

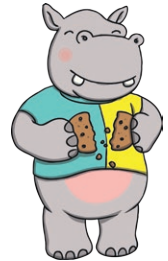


Can you add a 'h' to these words to complete the words and phrases?

appy edge og



ungry ippo



alf of a eart



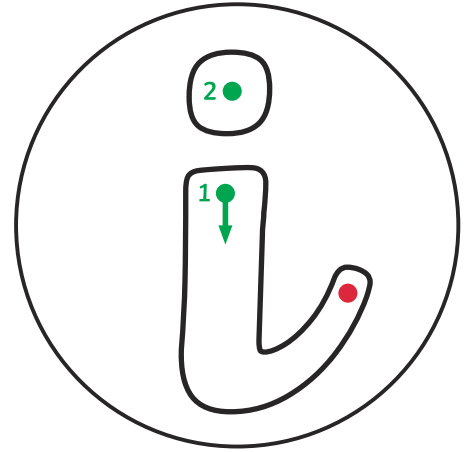
h

h



The Letter 'i'

Go straight down,
then take your pencil off to fly...
Right up to the top,
draw a dot and you have an **i**!



Can you add an 'i' to these words to complete the words and phrases?

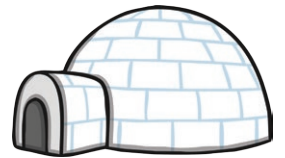
 ce cream



 guana



 cy gloo



i

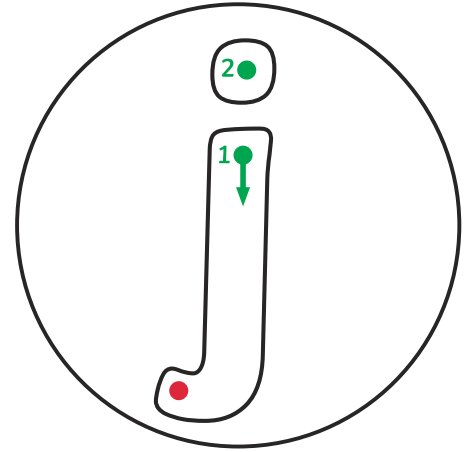
i



The Letter 'j'

Go straight down, under the line and then which way?

A tiny curl to the left, then fly to the top and dot your j.

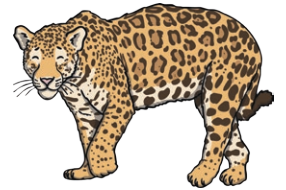


Can you add a 'j' to these words to complete the words and phrases?

otly ester



ungle aguar

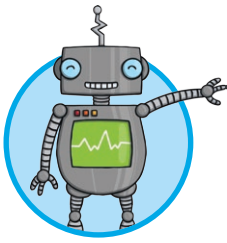


umping ellybean



j

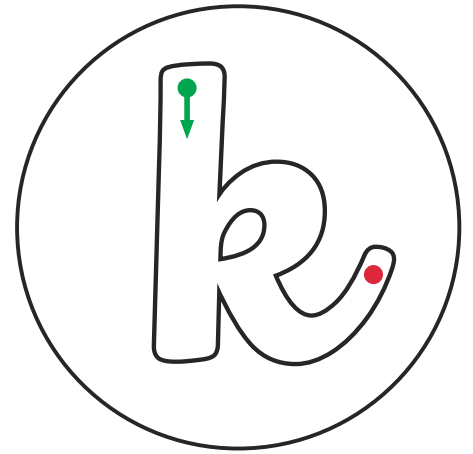
j



The Letter 'k'

Whoosh all the way down,
go halfway up and around.

Go down and out with a flick,
your **k** is ready to kick!



Can you add a 'k' to these words to complete the words and phrases?

ind ing



angaroo ic



oala eep



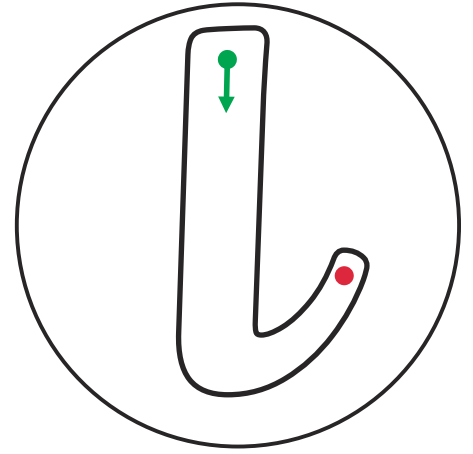
k

k



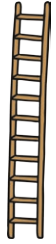
The Letter 'l'

Start up high and then go down – you're doing well. Then the tiniest curl to the right and you have an **l**!



Can you add an 'l' to the words to complete these words and phrases?

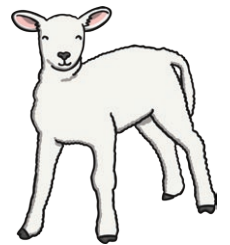
 ong adder



 arge ion

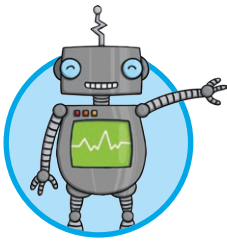


 oud amb



l

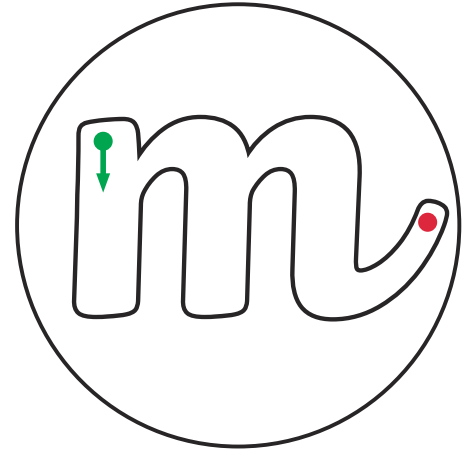
l



The Letter 'm'

Start at the top, down, up, over and down again.

Up and over and down once more to finish your **m**!



Can you add an 'm' to these words to complete the words and phrases?

any ice



oving ote

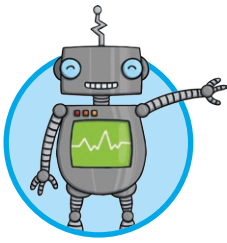


arvellous edicine



m

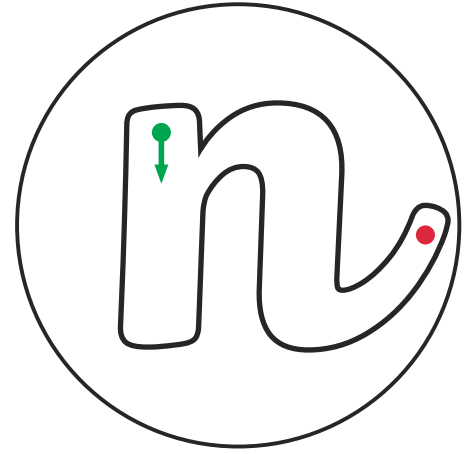
m



The Letter 'n'

Start at the top, go down,
then up and then...

Go over and down to the bottom
and there you have an **n**!



Can you add an 'n' to these words to complete the words and phrases?

ew ecklace



ice urse

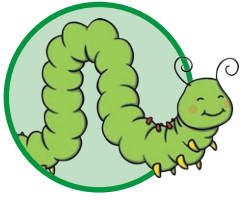


poi ty eedle



n

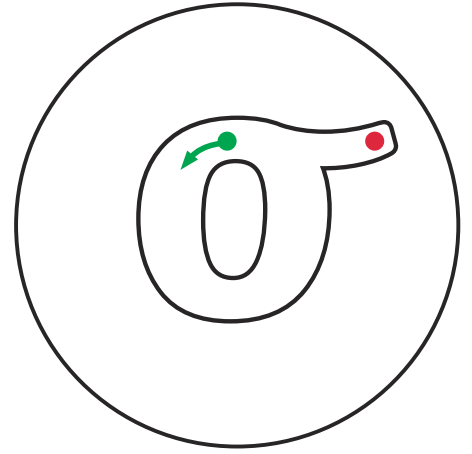
n



The Letter 'o'

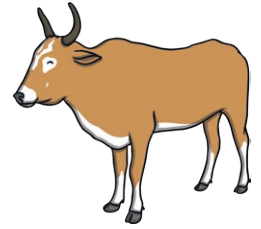
Start at the top and go anticlockwise, carefully and slow,

When your circle comes back to the top you have an **o**!

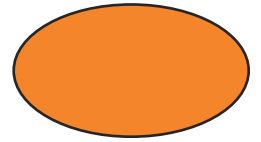


Can you add an 'o' to these words to complete the words and phrases?

 ld x



 range val

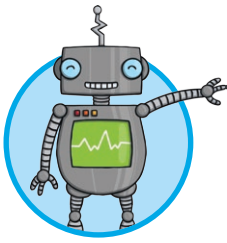


 ff and n



o

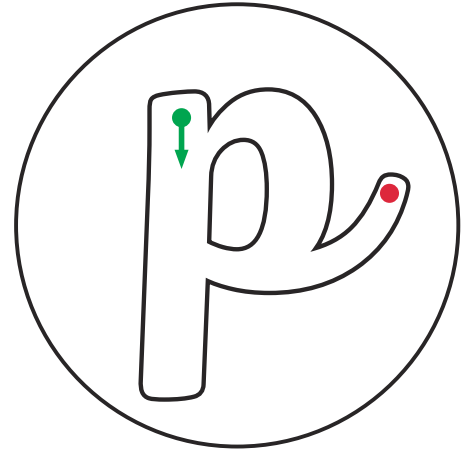
o



The Letter 'p'

Start at the top, go down under the line and then back neatly,

Then draw a curve that joins onto your line to make a **p**!



Can you add a 'p' to these words to complete the words and phrases?

ink ants



aw rints

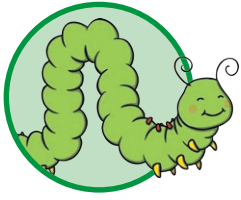


iece of izza



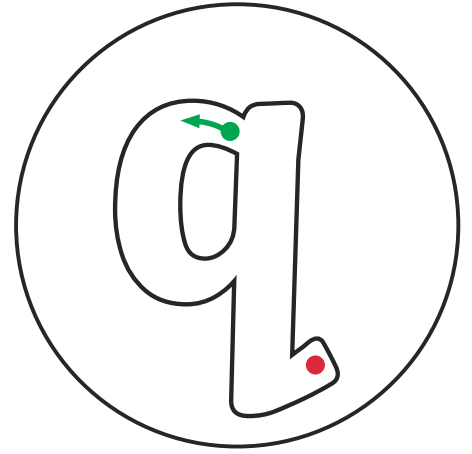
p

p



The Letter 'q'

Start with a c, go up, then down, then what do you do? Go under the line then flick to the right to make a letter **q**!

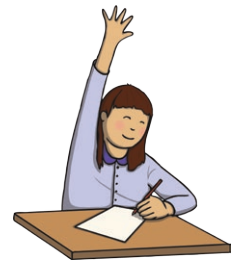


Can you add a 'q' to these words to complete the words and phrases?

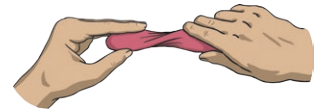
 uiet **u**eue



 uick **u**estion

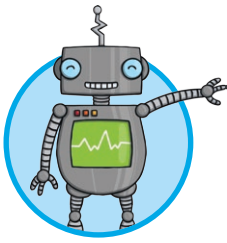


 suash and **s**ueeze



q

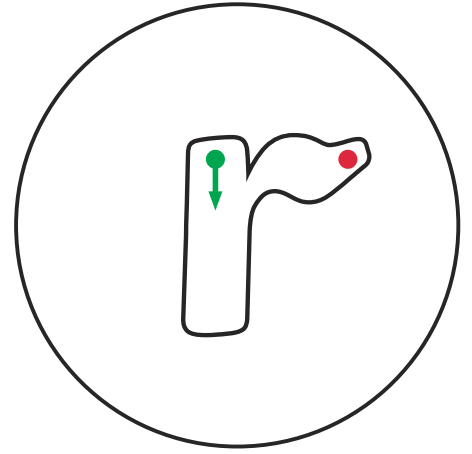
q



The Letter 'r'

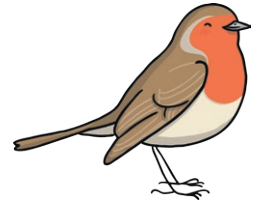
Start at the top, go down,
and up but not too far.

Then draw a small curl at the top to
make your perfect **r**!

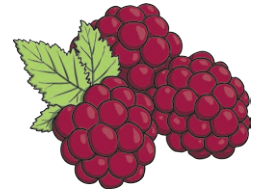


Can you add an 'r' to these words to complete the words and phrases?

ed obin



ipe aspberry

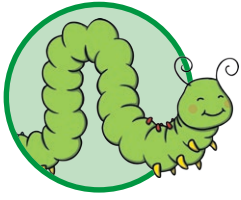


ound ing



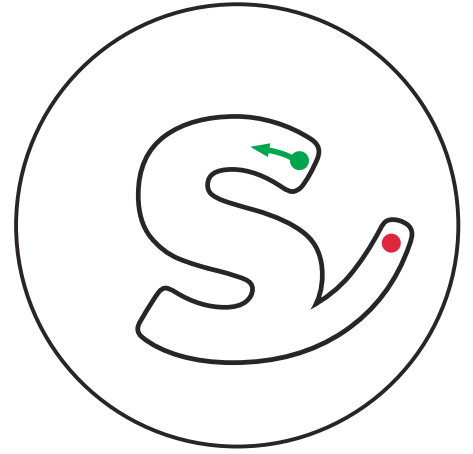
r

r



The Letter 's'

s is bendy, s is curly, s thinks it's best...curl left, right, left to make an s!



Can you add an 's' to these words to complete the words and phrases?

ix tar



metly ock



ad pider



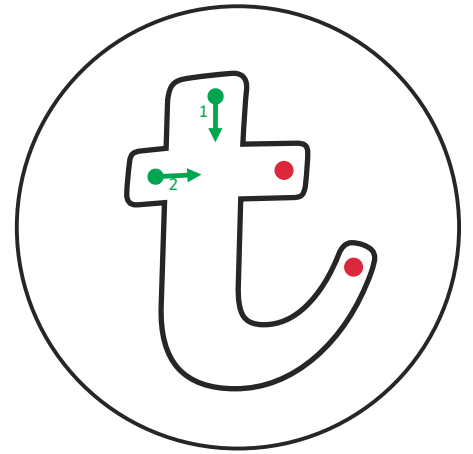
s

s



The Letter 't'

t isn't tall and it's not small, it's in between. Start at the top, go down and curl, then cross your 't'!



Can you add a 't' to these words to complete the words and phrases?

_iny _oad



_idy _able



_errible _iger



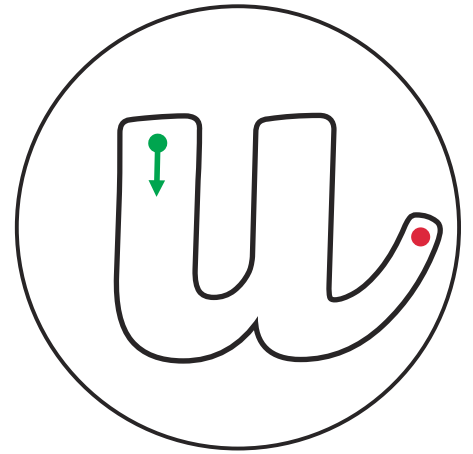
t

t



The Letter 'u'

Start at the top, go down, bend to the right and go up – woo! Go back down and then you've made the letter **u**!



Can you add a 'u' to these words to complete the words and phrases?

j _ mp _ p



_ nder the _ mbrella



_ n _ s _ al _ nicorn



u

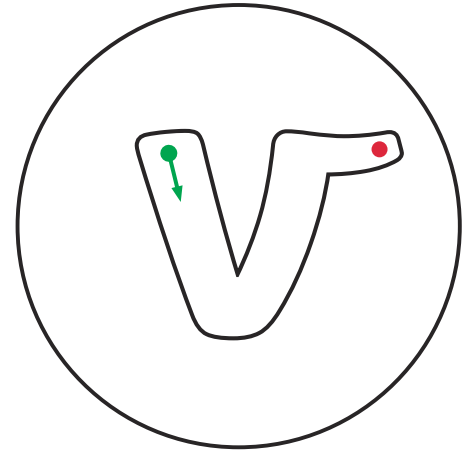
u



The Letter 'v'

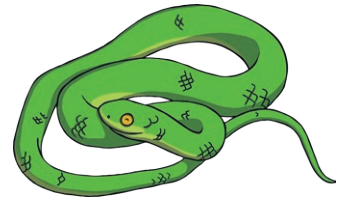
v is made of lines, no curls or bends or humps to see.

Diagonally down and then back up, hooray you've made a v!



Can you add a 'v' to these words to complete the words and phrases? What sound does the 'v' make in each word?

iper enom



ery kind et



e il iltain



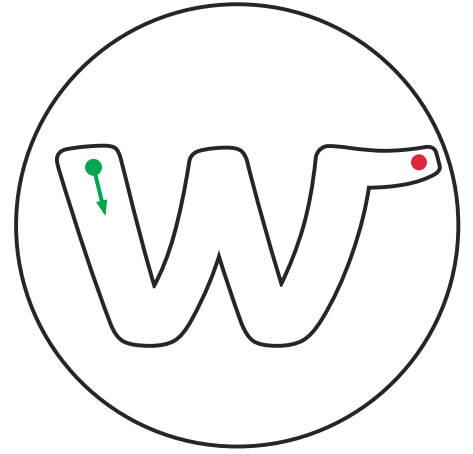
v

v



The Letter 'w'

Just like a v, there's only diagonal lines to do. Down, up, down, up is how you write a **w**!



Can you add a 'w' to these words to complete the words and phrases? What sound does the 'w' make in each word?

 avy ater



 icked itch



 et ellies



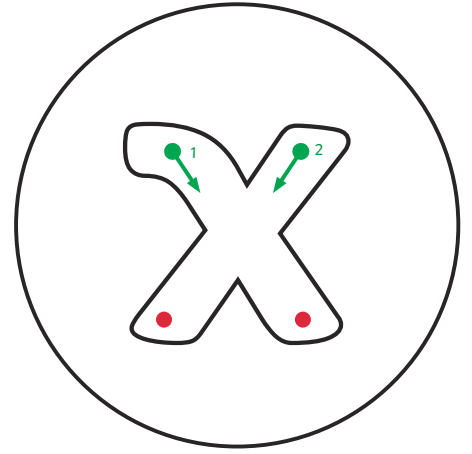
w

w



The Letter 'x'

Start at the top and draw a diagonal line from the left. Jump back to the top, go from right to left and you have an **x**!



Can you add an 'x' to these words to complete the words and phrases? What sound does the 'x' make in each word?

fire e_it

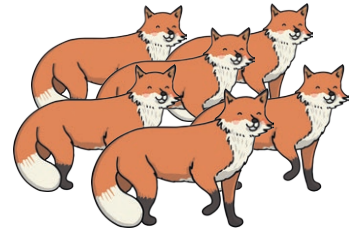
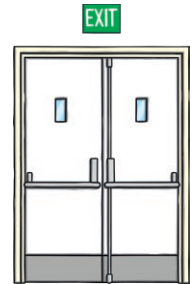
Handwriting practice lines for the word 'fire e_it'.

si fo_es

Handwriting practice lines for the word 'si fo_es'.

Ma_is e_cited

Handwriting practice lines for the word 'Ma_is e_cited'.



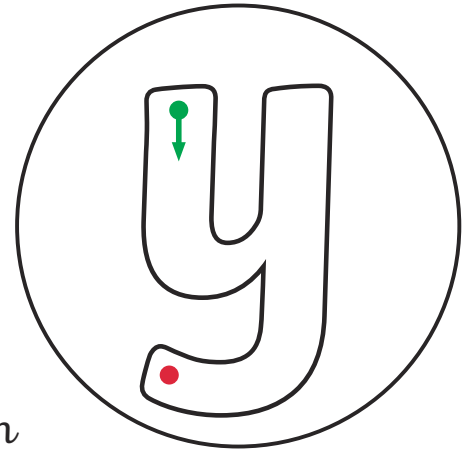
x

x



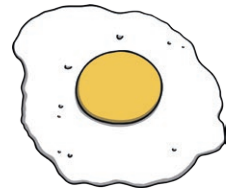
The Letter 'y'

Go down, bend to the right then head up to the sky. Go down, under the line and swing left to make a **y**.



Can you add a **y** to these words to complete the words and phrases? What sound does the **y** make in each word?

 ellow otk



 awning bo



 oung bab



y

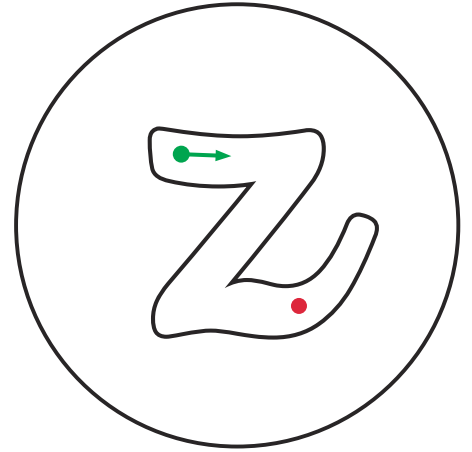
y



The Letter 'z'

Start on the left and go straight across the letter's head.

Then diagonally down then from right to left to make a **z**!



Can you add a 'z' to these words to complete the words and phrases? What sound does the 'z' make in each word?

 ebra at the oo



 ig ag



yummy pi a



z

z